

YJ-750T

Use's Manual



1 .

1-1.

1-2.

2 .

2-1. SPECIFICATION

2-2.

2-3.

2-4.

2-5.

3 . CONNECTION

3-1. Serial

3-2. USB

3-3. CONNECTOR

4 .

5 .

5-1.

5-2. EPSON TM-T88II

5-3. CITIZEN iDP-3540

1 .

THERMAL MINI PRINTER

가

, POS THERMAL

가

1-1.

- PANEL/DESK
-
- 가 가
-
- 가
- 가
- COLUMNS 가
- (SELF TEST)
-
-

1-2.

-
-
- INDICATOR
-
-
- POS SYSTEM
-
-

2

2-1. SPECIFICATION

	PANEL/DESK TYPE
	THERMAL
COLUMNS	24/32/36/42COL
	: 9x24, : 18x24 : 12x24, : 24x24
	/
DOT DENSITY	203 DPI(8dot/mm)
TOTAL DOT	2-inch (48mm, 448dot/line)
	130mm/sec
	57mmx80 Roll Paper
	16Kbyte
	RS-232C SERIAL (BAUDRATE : 2400/9600/19200/115200bps)
	USB
	DC +24V, 2.0A (OPTION : AC 110V/220V)
	-5 ~ 50 (Operation) -10 ~ 70 (Storage)
*	: 100Km(1) : 100
(mm)	129(W) x 134(D) x 119(H)

*

가

2-2.

●

LED	ON 가
LED	ON LINE ● ON LINE (가) LED가 ON ● OFF 가 ● LED가 가 가
FEED	

2-3.

가
 FEED 가 2
 가

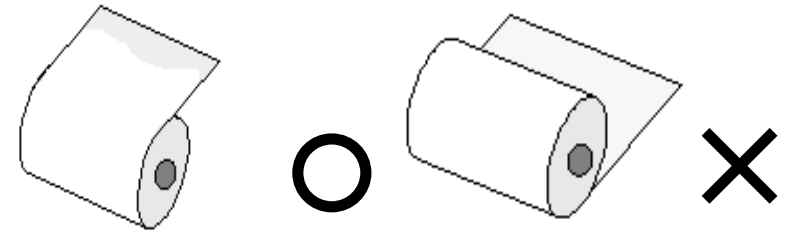
2-4.

가
 FEED 가 2
 가 가 2
 FEED
 FEED
 OFF

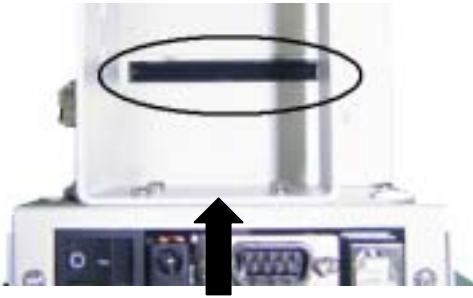
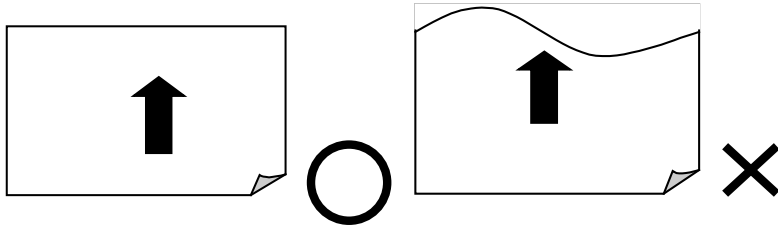
2-5.

가 ON-LINE LED가

"PUSH"

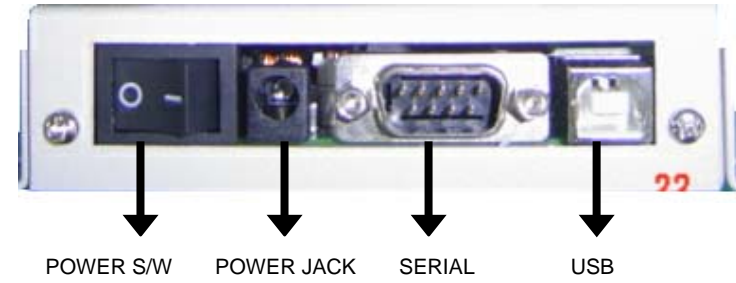


가



3 . CONNECTION

()



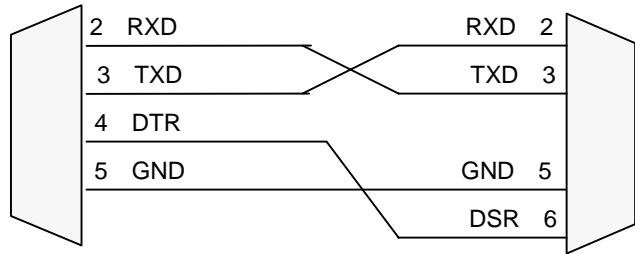
3-1. Serial

1) Serial Pin



Data Transmission	RS-232C Asynchronous
Handshaking	DTR/DSR or XON/XOFF control
Baud Rate	2400/9600/19200/115200bps (Default : 9600bps)
Bit Length	8 bits
Parity	None
Stop Bits	1 Stop
Connector	D-SUB 9 MALE

2) Interface Connection Cable



9Pin D-SUB Connector (FEMALE)
Printer

9Pin D-SUB Connector (FEMALE)
HOST

- Handshaking XON/XOFF DSR/DTR Line
- Paper End 0x07 Paper가 0x11(XON)

3) Interface Connector

Pin No			
2	RXD		
3	TXD		
4	DTR		<ul style="list-style-type: none"> ● 가 ● DTR/DSR 가 SPACE MARK ● MARK 가 가
5	GND	-	Signal Ground
6	DSR		<ul style="list-style-type: none"> ● HOST 가 ● SPACE HOST MARK ● DSR/DTR Handshaking ● Hardware Handshaking

3-2. USB (Option)

- USB Connector : Series B



No			
1	Vcc		USB HOST 5V
2	D -		-
3	D +		+
4	GND	-	Signal Ground

3-3. CONNECTOR

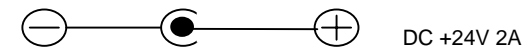
1) DIP S/W

SW No.		Define	S/W No.		Define
1	2		5	6	
OFF	OFF	9600bps *	OFF	OFF	32Columns *
ON	OFF	19200bps	ON	OFF	42Columns
OFF	ON	115200bps	OFF	ON	24Columns
ON	ON	2400bps	ON	ON	36Columns
3			7	8	
OFF		*	OFF	-	None Parity *
ON			ON	OFF	Even Parity
4			ON	ON	Odd Parity
OFF		EPSON *			
ON		CITIZEN			

* Default

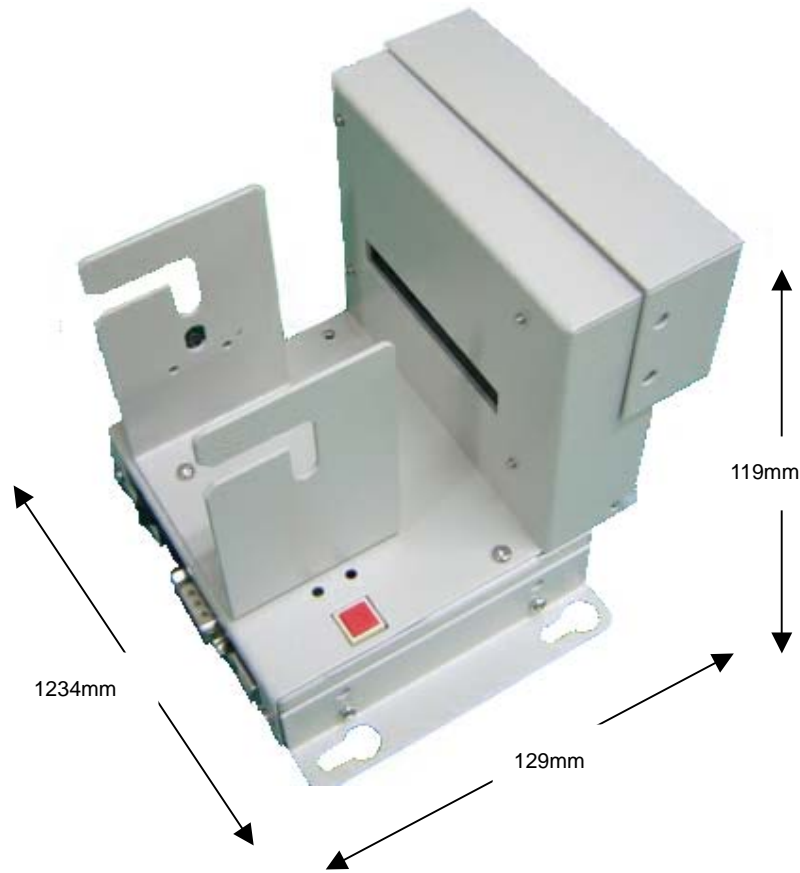
- DIP PCB

2) CONNECTOR



4 .

4-1.



5 .

5-1.

	2	3	4	5	6	7	8	9	A	B	C	D	E	F
0	SP	0	@	P	'	p	C	È	á		ì	±	α	=
1	!	1	A	Q	a	q	ü	æ	i		±	τ	β	±
2	"	2	B	R	b	r	é	Æ	ó		τ	τ	Γ	z
3	£	3	C	S	c	s	à	ò	ú		†	±	π	s
4	\$	4	D	T	d	t	ä	ö	ñ	†	-	±	Σ	f
5	%	5	E	U	e	u	à	ò	Ñ	†	†	τ	o	J
6	&	6	F	V	f	v	á	û	*	†	†	τ	μ	+
7	'	7	G	W	g	w	ç	ù	"	†	†	†	τ	~
8	(8	H	X	h	x	ê	ÿ	¿	†	±	±	φ	-
9)	9	I	Y	i	y	ë	Ö	Γ	†	†	±	θ	.
A	*	:	J	Z	j	z	è	Ü	Γ		±	†	Q	.
B	+	:	K	[k	(ï	ç	±	†	†		δ	γ
C	,	<	L	\	l		î	£	±	±	†		=	"
D	-	=	M]	m)	í	¥	ì	±	-		θ	?
E	.	>	N	^	n	~	À	Pt	«	±	±		c	■
F	/	?	O	_	o	SP	Á	f	*	†	±		n	

	23h	24h	40h	5Bh	5Ch	5Dh	5Eh	60h	7Bh	7Ch	7Dh	7Eh
U.S.A.	#	\$	@	[\]	^	~	()	-
FRANCE	#	\$	à	'	ç	§	^	~	é	ù	è	"
GERMANY	#	\$	§	Ä	Ü	Ü	^	~	ä	ö	ü	ß
U.K.	#	\$	@	[\]	^	~	()	-
DENMARK I	#	\$	@	Æ	ø	Å	^	~	æ	ø	å	~
SWEDEN	#	¤	É	Ä	Ö	Å	Ü	é	ä	ö	å	ü
ITALY	#	\$	@	'	\	é	^	~	à	ò	è	ì
SPAIN	Pt	\$	@	í	Ñ	¿	^	~	*	n]	~
JAPAN	#	\$	@	[¥]	^	~	()	~
NORWAY	#	¤	É	Æ	ø	Å	Ü	é	æ	ø	å	ü
DENMARK II	#	\$	É	Æ	ø	Å	Ü	é	æ	ø	å	ü
KOREA	#	\$	@	[₩]	^	~	()	~

YJ-750T

- (EPSON TM-T88II)

		HEX
	HT	\$09
	LF	\$0A
	CR	\$0D
	ESC BEL	\$1B \$07
	ESC SP n	\$1B \$20 n
	ESC ! n	\$1B \$21 n
	ESC \$ NI Nh	\$1B \$24 NI Nh
/	ESC % n	\$1B \$25 n
	ESC & y c1 cw [...]	\$1B \$26 y c1 cw [...]
	ESC * m NI Nh d1...dk	\$1B \$2A m NI Nh d1..
/	ESC - n	\$1B \$2D n
1/8	ESC 0	\$1B \$30
1/6	ESC 2	\$1B \$32
	ESC 3 n	\$1B \$33 n
	ESC = n	\$1B \$3D n
	ESC ? n	\$1B \$3F n
	ESC @	\$1B \$40
	ESC D n1...Nk NUL	\$1B \$44 n1...Nk NUL
	ESC E n	\$1B \$45 n
- /	ESC G n	\$1B \$47 n
	ESC M n	\$1B \$4D n
	ESC R n	\$1B \$52 n
90 /	ESC V n	\$1B \$56 n
	ESC \ NI Nh	\$1B \$5C NI Nh
	ESC c 5 n	\$1B \$63 \$35 n
n	ESC d n	\$1B \$64 n

YJ-750T

		HEX
Partial	ESC i	\$1B \$69
Full	ESC m	\$1B \$6D
	ESC h n	\$1B \$68 n
	ESC t n	\$1B \$74 n
/	ESC { n	\$1B \$7B n
	GS ! n	\$1D \$21 n
	GS * x y d1...d(x*y*8)	\$1D \$2A x y d1...d(x*y*8)
	GS / m	\$1D \$2F m
ID	GS I n	\$1D \$49 n
	GS L NI Nh	\$1D \$4C NI Nh
	GS W NI Nh	\$1D \$57 NI Nh
	GS g n	\$1D \$67 n
	GS h n	\$1D \$68 n
	GS k m d1...dk NUL GS k m n d1...dn	\$1D \$6B m d1...dk NUL \$1D \$6B m n d1...dn
가	GS v 0 m XI Xh Yl Yh d1...dk	\$1D \$76 \$30 m XI Xh Yl Yh d1...dk
	GS w n	\$1D \$77 n
/ / (Option)	GS T n y m d h m s	\$1D \$54 n y m d h m s

YJ-750T

● (CITIZEN iDP-3540)

		HEX
	LF	\$0A
	CR	\$0D
n	FF n	\$0C n
가	SO	\$0E
가	SI	\$0F
가	DC4	\$14
	ESC BEL	\$1B \$07
Clear	CAN	\$18
	DC1	\$11
	DC2	\$12
/	ESC R n	\$1B \$52 n
	ESC * n1 n2 d1...dk	\$1B \$2A n1 n2 d1...dk
1/8	ESC 0	\$1B \$30
1/6	ESC 2	\$1B \$32
	ESC C n	\$1B \$43 n
	ESC f	\$1B \$66
Skip	ESC N n	\$1B \$4E n
Skip	ESC O	\$1B \$4F
	ESC M n	\$1B \$4D n
	ESC h n	\$1B \$68 n
Full Cut	ESC P 0	\$1B \$50 \$30
Partial Cut	ESC P 1	\$1B \$50 \$31
	GS g n	\$1D \$67 n
ID	GS l n	\$1D \$49 n
	GS h n	\$1D \$68 n
	GS k m d1...dk NUL	\$1D \$6B m d1...dk NUL
	GS k m n d1...dn	\$1D \$6B m n d1...dn
	GS w n	\$1D \$77 n
/ / (Option)	GS T n y m d h m s	\$1D \$54 n y m d h m s